

HEIGHT ADJUSTABLE DESK SOLUTIONS



AUDIOVISUAL-IT

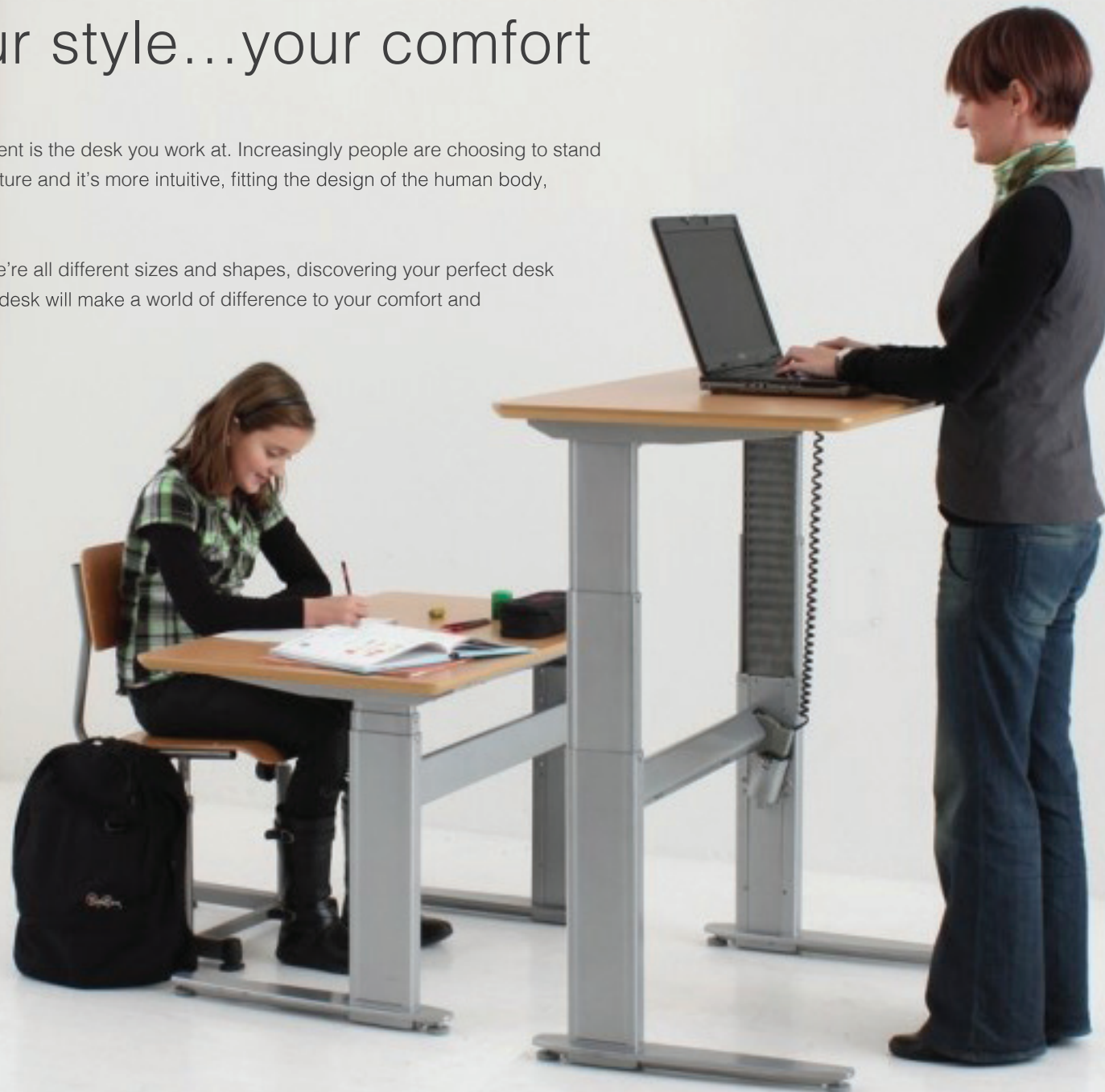
Your desk...your style...your comfort

The most important part of your working environment is the desk you work at. Increasingly people are choosing to stand at their desks – it's healthier... improving your posture and it's more intuitive, fitting the design of the human body, reducing fatigue and other health issues.

Many people sit at desks to work, and because we're all different sizes and shapes, discovering your perfect desk height can be difficult, but having the right height desk will make a world of difference to your comfort and longer term health.

Imagine a desk where you can do both... stand or sit whenever you want. You choose the height, the colour and the finish. That vision is now a reality. Loxit desks bring over twenty years of experience in the professional integration of audio visual and IOT technology to your work station.

We have delivered solutions for thousands of customers, our innovation has seen dramatic improvements in the access and usability of countless pieces of AV and IOT within numerous businesses and corporations, healthcare and education too.



AUDIOVISUAL-IT

Getting it right...

When should you be seated? and when should you stand?
Here's a quick guide to help you determine which activities are best performed seated, and which are best performed standing.

SEATED WORK

Use a ergonomic chair or a saddle seat when ...

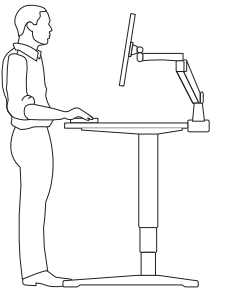
- > Work is light.
- > You are working within a comfortable arm reach envelope (within 38 cm or 15" of your body's center).
- > Your work is within a comfortable field of view (less than 36" from the eyes).
- > The work is prolonged.



STANDING HEIGHT WORK SURFACE

Work in a standing posture or in a saddle chair when ...

- > Your work is performed over distances that exceed your comfortable arm reach envelope.
- > Your work requires that you move your body along with your arms.
- > The work is spread out over several areas.
- > Your work height above the floor is variable.
- > The work involves weighted objects or large forces.
- > Your work requires you to move around in order to view something.
- > You need to relieve the fatigue of sitting for long periods of times.



USER-ADJUSTABLE WORK SURFACE AT SITTING HEIGHT

A desk that you can adjust up or down a few inches is good when...

- > You need to relieve the fatigue of sitting for long periods of time.
- > For shared workstations.

Postural variety is important for maintaining good health. Whenever possible, vary your work postures between sitting and standing.

COMMAND DESK SOLUTIONS

CODE 3100

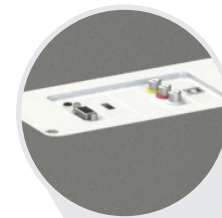


The Command desk offers intelligent control of your working environment with secure storage for all your equipment within the desk itself. That's right, all your AV infrastructure can be housed within the desk, using industry-standard 12U 19" racking. And to keep things simple, there's just one single switch power point that will power everything, keeping all the cables neat and tidy too.

Your wish is our command...we can accommodate any request. We offer a selection of colours, shapes and other technology specifications. If you don't see what you're after, just ask, we are experts in our field, providing countless bespoke solutions that integrate technology and equipment around your needs.



The Command desk is 2000mm long.



Complete connectivity - of your audio visual equipment from one central panel featuring RGB, RCA (red-yellow-white), HDMI, USB and stereo port for absolute convenience.

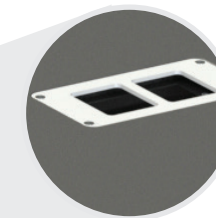


Proven track record -

your equipment is safe and secure in the storage rack area, thanks to our extensive testing and refining that ensures we use only the best materials, such as ASSA locks, anti-jemmy bar design, all welded construction and full length piano hinges on the door to give you complete peace of mind.

COMMAND DESK SOLUTIONS

CODE 3100



Neat and tidy - All our desk solutions feature discreet cable channeling and face plates, ensuring that your work space is free of any unnecessary clutter.



Integrated power - our integrated 8 way power strip and 3 IEC outlets provides power for all your desktop devices (max 2500W). All the electrical infrastructure is high quality with CE marks.



Corporate image - the centre panel of the front fascia can be configured to display your brand colours and logo with optional coloured, back lighting.



Robust construction - this desk comes painted and features easy access, steel construction. Like all Loxit products, it comes complete with detailed, clear assembly instructions to ensure the installation is quick, neat and secure.

Anything's possible...

- ▶ Table top veneers and desk shapes
- ▶ Frame colour options
- ▶ Optional logo panels in the front fascia with coloured back lighting
- ▶ We create bespoke solutions that are seamlessly tailored to your requirements.

Loxit Hi-Lo® desks are incredibly versatile. The simple, stylish lines of the unit belie the technology within.

There are numerous configurations that go way beyond the shape of the desktop itself. We can accommodate specific brand colours and finishes. Every desk is available with or without storage. But the best bit... the whole thing is powered via a single power point. That's right the desk and all your equipment is powered through 1 plug...plus you can charge any USB device directly from the desk, through our in-built charge points.

Are you sitting comfortably?

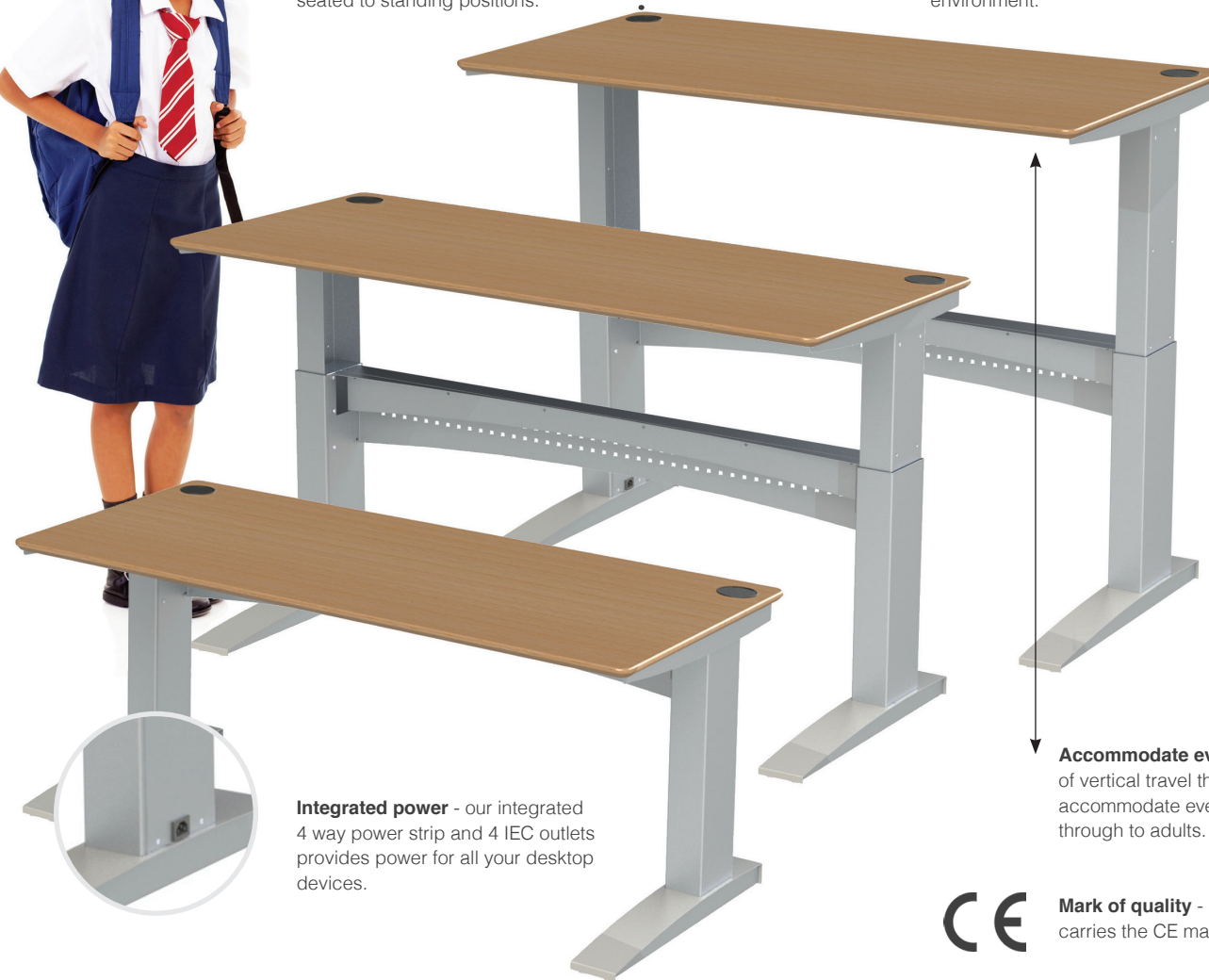
The Hi-Lo® Workspace enables you to achieve the perfect working position and posture. If like many work environments you operate a 'hot-desk' or freeflow system, a Hi-Lo® desk ensures that anyone sitting at that workstation can achieve comfort and the best possible position, improving productivity and reducing fatigue.

The standard configuration includes two desktop frame sizes - standard is 960mm wide, this holds 1200,1400 and 1600mm wide desktops. For 1800 and 2000mm wide desktops, we have a 1600mm frame. All desktops are 25mm thick and offer working heights from 655-1225mm, with a 120kg maximum load.



Neat and tidy - All our desk solutions feature discreet cable channeling and face plates, ensuring that your work station is free of any unnecessary clutter and the desk is free to transition from seated to standing positions.

Robust construction - the Hi-Lo® desk is the result of years of experience, and a proven track record in the education and corporate environment.



Accommodate everyone - with nearly 600mm of vertical travel the Hi-Lo® Desk can accommodate everyone from the youngest toddlers through to adults.

Integrated power - our integrated 4 way power strip and 4 IEC outlets provides power for all your desktop devices.



Mark of quality - all of our electrical infrastructure carries the CE mark for your peace of mind.

Anything's possible...

- ▶ Table top colours
- ▶ Frame colour silver or black
- ▶ Desk shapes
- ▶ We create bespoke solutions that are seamlessly tailored to your requirements.

Blending in - coloured storage and desktops to blend into the surroundings, delivering a more professional finish.



120kg

Load capacity - the generous load capacity ensures you accommodate all your equipment.

Hi-Lo® SPOTLIGHT™

CODE 3400

The Hi-Lo® Lectern can accommodate everyone...from young children to fully grown adults including wheelchair users and others with restricted access. The Hi-Lo® Spotlight lectern is electronically height adjustable, from 925mm to 1585mm (measured to the center of the angled top).

The simple, stylish lines of the unit will fit any environment thanks to the broad range of colour combinations available.

Like every Loxit product, these Lecterns conceal a wealth of technology hidden, deep inside the elegant frame - with over 20 years experience, we can integrate a lot of connectivity within this small space, including WiFi hotspot, hard-wired LAN access points, USB charging, secure storage and of course power points.

The internal storage area measures 295x350x75mm. The unit comes complete with USB ports for microphones and reading lights.

Integrated power - our integrated 4 way power strip and 4 IEC outlets provides power for all your desktop devices. It also ensures that all equipment is free to move up and down with the desk.



Mark of quality - all of our electrical infrastructure carries the CE mark.



Anything's possible...

The Hi-Lo® Spotlight™ can be configured in many ways...

- ▶ Table top veneers and body colour options
- ▶ Bespoke technology options available



50kg

Load capacity - the generous load capacity ensures you accommodate all your equipment.

Fully integrated - the lectern can be integrated into the audio visual infrastructure of the room via the option of a built-in AV interface plate and control.

Total control - raise and lower the lectern at the touch of a button. All our lifts have been subjected to rigorous stress tests. We are so confident in our products that we offer a full 5 year warranty.



Hi-Lo® SPOTLIGHT™

CODE 3400



Accommodates all - thanks to our deep top option. Perfect for those with restricted access and wheelchair users.

Blending in - coloured frames and desktops to blend into the surroundings, delivering a more professional finish.



HIVE DESK SOLUTIONS

CODE 3300

The Hive embraces everything Loxit produces, it can be configured to deliver whatever you need. On the one hand it could simply be a really useful collaborative desk area, on the other it can bring together screen, whiteboard, device management, charging and security technologies. Combining them all into one, central location where you have quick and easy access to everything you need...helping you deliver everything from impromptu internal meetings to full-blown global presentations complete with AV integration and control.

As with all our desk solutions, there are numerous configurations that mean you can create a space for your needs...

- ▶ Universal USB charging for up to 4 devices
- ▶ Integrated display screen
- ▶ Easy access AV connections and network ports
- ▶ Single point power supply for multiple devices
- ▶ Integrated, digital whiteboard
- ▶ Camera and microphone

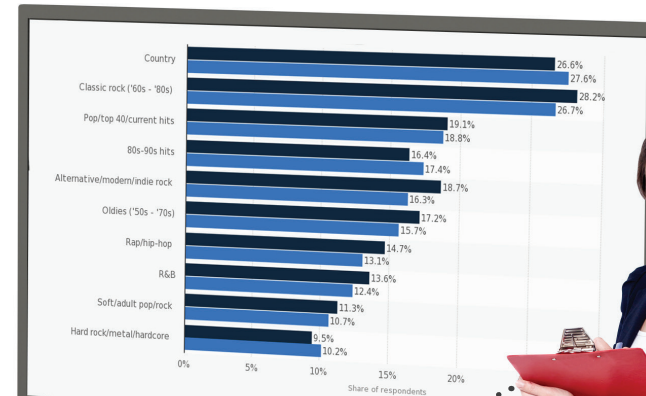
The levels of integration go way beyond the technical connecting of devices, extending into the physical form and function...colours, materials and finishes, including...

- ▶ Table top veneers
- ▶ Frame colour options
- ▶ Desk shapes

The list goes on...and on...and on. The standard desk is available in the following configuration :-
1800x800mm, 25mm thick, 650mm desk height,
150kg maximum load.



Integrated power - our integrated 2 way power strip and 10 USB outlets provides power for all your desktop devices. (optional)



Quickly connect - an external device through the AV panel featuring RGB, RCA (red-yellow-white), HDMI, USB and stereo port for absolute convenience.



Robust construction - this desk features painted, steel infills and framework. These ensure the unit is stable and balanced in every configuration including large LED screen mounts and whiteboard solutions. Maximum screen weight 30kg.



Ergonomic shape - the shape of the desk has been designed to allow up to 5 people to huddle around the central area.

